

Precision  
CAM



A brand of

Allen Leigh  
Security & Communications Ltd.



cowcam  
instruction manual

## **Table of Contents**

Introduction .....	1
Table of Contents .....	1
Warranty .....	2
New Customers .....	2
Basic Kits .....	3
General Information .....	4
Transmitter Information .....	4
Setup Instructions .....	5
Indoor Equipment .....	5
Outdoor Equipment .....	5
Small PTZ Camera Mounting .....	6
Large PTZ Camera Mounting .....	7
Top Mount PTZ Camera Mounting	
Programming /Camera Operation .....	8
Creating Preset Location Points .....	8
Tour .....	9
Quick Presets .....	10
Troubleshooting .....	10
Additional Equipment	
DVR .....	11
Audio Mod .....	13
Expansion Pack .....	14
High Gain Antenna .....	14

Thank you for purchasing your PTZ-IR Livestock Monitoring System (Cow Cam) from us. You will get many years of use from your new wireless video system, it comes with a one-year warranty on parts and labor, and we guarantee it to work when installed according to our assessment.

If you have any problems please contact our office at  
**1 (204) 728-8878**                      **1-866-289-8164**

**Thank You! And Enjoy!**

Like us on Facebook /AllenLeighSC  
Follow us on Twitter @AllenLeighSC  
Also check out additional accessories on  
[www.allenleigh.ca](http://www.allenleigh.ca)

# Attention:

## New Customers

Please ensure that you set up your complete Camera System *in house first* before final outside installation.

This will enable our Technicians to accurately assist you, should you have any problems. You can also visit [www.cowcam.ca](http://www.cowcam.ca) then click support on the left hand side for after hours troubleshooting steps

If you are within Manitoba or Saskatchewan please do not forget to send one copy of your invoice back to us with your section/township/range and signature for Cow Cam to be PST exempt!

### **WARRANTY COVERAGE:**

Allen Leigh Security is proud to offer one year warranty on our livestock monitoring systems which covers parts and manufacturer defects. The warranty does **not** include the following;

- ‡ Acts of nature (this includes tornado, hail, voltage surges caused by lightning or improper wiring and flooding damage etc.)
- ‡ Improper use or installation of CowCam systems causing damage or improper functionality of camera or equipment
- ‡ Abuse or mechanical damage resulting in system failure. Such as dropping or hitting equipment
- ‡ Full submersion in liquids of any sorts accidental or otherwise.
- ‡ User error resulting in equipment damage or failure.

If there is a requirement to return your system to ALSC, please contact us to receive an RMA#, write your RMA# on the package being shipped, and ensure that it is shipped properly with adequate packaging to protect it in transport, ALSC covers shipping one way.

Please note that in any case warranty is needed ALSC wants to ensure that we can provide you with a replacement or loaner as soon as possible so you continue to use your camera system. In order for ALSC to offer this service we will charge your credit card, once ALSC has received the faulty equipment and it has been verified we will **fully refund** the deposit charge on the card provided. In the care of a loaner equipment, you will be charged a deposit which will be credited back to your card upon return of the loaner equipment.



**Your Complete PTZ CowCam Kit comes with:**

1. 1 - Transmitter Box
  2. 1 - PTZ Camera (Large/ Mini) - *10X PTZ shown above*
  3. 2 -30 ft. Power Cables (red with black & Orange ends)
  4. 1 - 6 pin 30 ft. PTZ Camera Cable (Black)
  5. 1 – 15' RCA Cable
  6. 1 - Wireless Receiver
  7. 1 - Camera Controller
  8. PTZ-IR Cam Manual and PTZ Installation DVD
  9. Camera mounting bracket (and hardware)
- Camera and transmitter power supplies



**Your Complete Fixed Camera Kit comes with:**

1. Transmitter Box
2. Color Camera with stand and IR LED lights
3. 30ft of camera cable
4. 30 ft. Power Cable (red with black ends)
5. Transmitter power supply
6. Receiver with a power supply & remote
7. RCA cable (red, yellow, white ends)
8. Instruction manual

## **General Information**

The system consists of two main parts, a barn side, and a house side.

On the end where the camera will be located (the barn) is also where the transmitter box and power supply will be mounted (on the outside of the building facing the house where the receiver will be located) The transmitter and camera will be connected together with the camera cable. A power supply will also be connected to the camera. The receiver will be located at the viewing location (your house) and connected to your TV with the RCA cables. The joystick controller will also be located at the house

The camera and transmitter will be provided with a power supply and color coded 10 meter cable

We strongly recommend using a surge protector and grounding the camera mount to prevent potential damage in the case of power surges or lightning.

## **Basic Setup Instructions:**

**\*NOTE: Please see the Optional Equipment section for setup and information on any additional equipment you have purchased.\***

### **Indoor Equipment (House Side)**

Begin by plugging the power supply for the receiver into the back of the receiver (DC 12V). Plug the Yellow RCA cable into (video) the back of the receiver and the other end will plug into your T.V or DVR (into the yellow video jack). (The standard channel select setting for the receiver is #1). You only need to connect the audio RCA cables (white/red) if you purchased the optional Audio modification box.

Screw the mini bud antennae to the back of the PTZ controller, finger tight. Connect the power supply to the PTZ camera controller. This will be the only connection to the controller that is required—the unit operates wirelessly.



Please note that the controller is not connected to video it controls camera movement only.

The signal to operate the movement of the camera will be sent wirelessly via the antenna on the PTZ controller.

### **Outdoor Equipment (Barn Side)**

Now that you have the receiver and controller set up, we will now set up the outdoor equipment. Starting with the camera, plug the camera cable into the 6-pin male connector end on the camera. The other end of the camera cable will be connected to the bottom of the transmitter where there is a 6-pin female connector that it will plug into.

Each of the power cables will get plugged into their associated power supply. **Making sure that the color coordinated cables are matched** Plug in the power supply box to a 110V outlet and the camera will begin its startup routine. During which time it will display on the TV screen its information such as its address, baud rate, and protocol.

Once you plug in the controller, make sure that the controller and camera are on the same address, take



note of what the address of the camera is from the TV s when it does its startup routine, and then enter in that address number on the keypad of the PTZ Controller followed by the CAM button. (Eg Dome ID: 001, on the keypad of the controller press: 01 on the PTZ controller then CAM button. That will set the address on the keypad to 01 and you will be able to control the camera with address 01.) Normally the camera and controller addresses will be 01 (001), but that is not always so.

### Transmitter Information



If you unscrew the 4 Phillips screws on the front of the transmitter you will be able to take the cover off. Please do not over tighten them as they will break. Be sure to replace the lid in the correct orientation or it will not seal correctly. Tip: note the position of the logo before removing the lid.

Inside of the transmitter box you will find a LED display this will tell you what channel this particular transmitter is on, it can be switched to one of seven frequencies. You can change the channels by using the two buttons. If you push the channel selector once, it will go to channel two, once more to three etc. go to channel 3, and so forth.

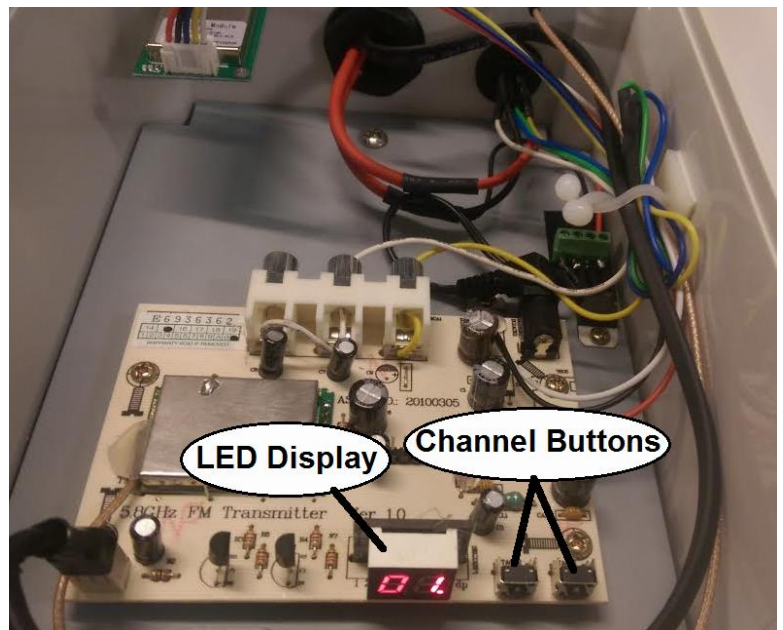
Be sure not to have more than one transmitter set on the same channel, i.e. channel one (you won't damage anything but the video picture at the house will look very scrambled). Ensure that the channel you have the transmitter set on matches the channel on the receiver at the house.

There is no on/off switch for the transmitter or camera; the only way to turn it off is to unplug the unit.

We strongly recommend that you unplug the unit after your calving season is complete, and wrap up the plug end, as damage may occur during thunderstorms and extremely high winds due to power lines clashing. You will know that the unit is powered on when the channel indicator is lit inside the transmitter box.

There is a mounting bracket that is sent with the unit so you can mount it to a pole or wall. The transmitter must be mounted outside. Install it so it fits tightly to the mounting location. Connect camera to mount. Connect power cables to power boxes. Finally run the camera cable from the transmitter to the camera.

**Caution:** ensure the cable does not get cut by any sharp edges from the hole you cut. Also be sure to aim the transmitter so that it points towards where the receiver is located. The transmitter should be mounted in the vertical position with the mounting hardware on the bottom, the transmitter sticker facing the receiver location and the antennas pointed down.



## Camera Mounting Instructions

### Small PTZ

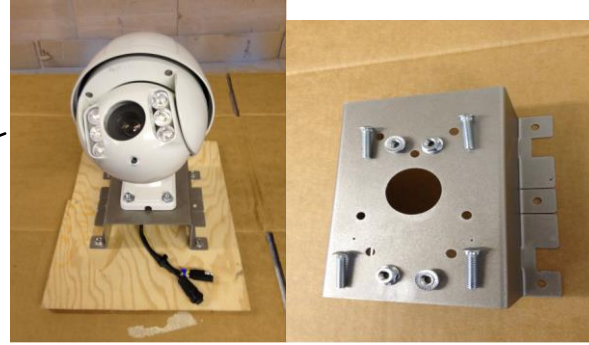


**Kit Includes:**

- (1) LMS-MNT-PTZ-SM universal mount bracket
- (4) 1" X 1/4" track bolts for camera attachment
- (4) 1/4" lock washer nuts
- (1) 5/16" flat washer (for setting track bolts)

**Step #1: Installing track bolts**

- Choose the camera mount bolt pattern before installing track bolts.



- If a bolt pattern is not available drill 17/64" holes for other patterns.
- Install the track bolt from the inside of the mount and use the four 5/16 flat washer (between the nut and mount base) to help the bolt into the 17/64" hole
- Use a wrench to tighten the nut thus pulling the track bolt into firm position.
- The track bolts can also be hammered into place

**Step #2: The MNT-PTZ-SM-001 mount bracket**

Can be used for the following applications:

- \* Flat Mounting
- \* Corner Mounting
- \* Pole Mounting

**\*Flat mounting example:**

Installing #14 or 1/4" self tapping hex head screws after track bolts installed (plywood is only used for demonstration purposes, not needed for installation. Use six screws for a solid mounting into wall.) - See image to the left

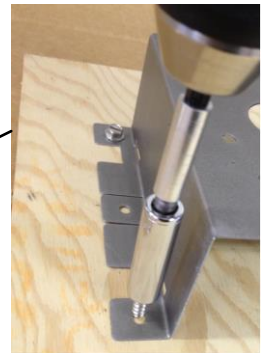


**\*Corner Mounting example:**

Bending of mounting flanges in a vise to the appropriate angle is required (#14 or 1/4" diameter attachment screws required) - See images to the right

**Pole mounting example:**

Flanges bent to appropriate angle for pole diameter (use a Stainless large size hose clamps or self tapping screws #14 or 1/4") - See below



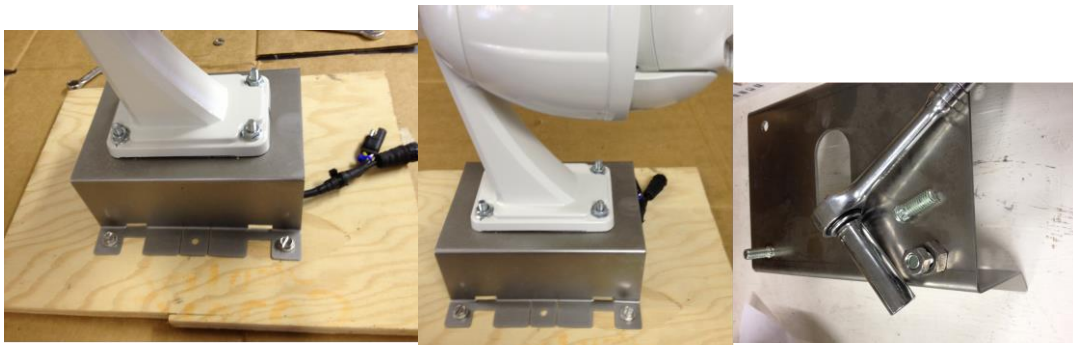
**Step #3:**

After the LMS-MNT-PTZ-SM mount bracket is fixed to the wall or pole, the camera can be attached to it using 1/4" nuts (supplied). The wiring can led through the hole or outside as necessary.

Example: (flat mount shown)

**Step #4:** Next take the power cable from the power supply box with orange end and plug it into the matching plug on the camera. An optional extension cable may be supplied.

The cable with the black end from the power supply box will get plugged into the matching plug on the transmitter.





## Large PTZ

The large camera mount LMS -MNT-PTZ-LRG can be used to mount the camera on a telephone pole or exterior corner of a building.

It is made of stainless steel and supplied with 3/8" course thread track bolts and flange nuts.

The track bolts must be installed in the mount so that they project out toward the camera mount.

To install the track bolts, use the 4 washers provided as a spacer, then pull the track bolt into the mount with the supplied 3/8" course flanged nuts. The track bolts may also be hammered in.

**\*\*mount the bracket on the pole or wall before installing the camera\*\***

Two methods of attachment to a pole are available:



**Step #1:** use 4 or 6, 3/8" lag screws – see left image

**Step #2:** 4 or 6, large stainless adjustable tie straps – see right image



### Exterior Corner Mounting:

The camera mount bracket is designed to fit on a corner of a building. Use 2"X3/8" lag screws to solidly mount it on an exterior corner.

### Flat Wall Mounting:

Large 3/8" hex self-taping lag screws are available for fastening the mount directly to a wall. It is recommended that if the camera is being mounted directly to a wall, that 1" plywood backing plate be solidly attached to the wall, then the camera attached to the plywood backing using 3/8" X 2" lag screws.

**Step #3:** Next take the power cable from the power supply box with orange end and plug it into the matching plug on the camera. An optional extension cable may be supplied. The cable with the black end from the power supply box will get plugged into the matching plug on the transmitter.



## **Top Mount Installation**

### Kit Includes:

- (1) LMS-MNT-PTZ-TM (Mounting Plate)
- (2) 1"x1/4" track bolts X4 (for mounting the plate)
- (3) 1/4" lock washer nuts X4
- (4) 5/16" washers

### Mounting Plate:



### Hardware:



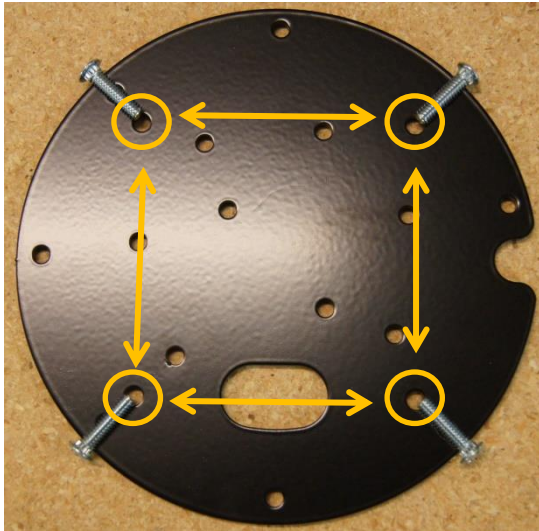


**Instructions include the following:**

- How to pull track bolts into the mounting plate.
- How to fasten the mounting plate to top of pole.
- How to fasten camera to the mounting plate.
- 

**Step #1 – Setting Track Bolts:**

-Locate four holes in a square pattern you will be using to mount the camera.



- Put your track bolt through one of the 4 holes.
- Put all 4 washers over the end of the bolt and thread on a nut.
- Using an 11mm Socket or wrench. Firmly tighten the nut to pull the bolt into a properly set position.
- A hammer can also be used to set the track bolt.

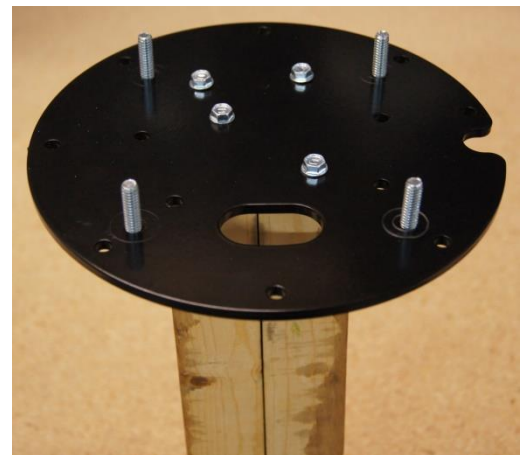


**Step #2 – Fastening Mounting Plate to Pole:**

-Typically the mounting plate would be fastened to the top of a light post (telephone pole). In this case a 4x4 Post was just used as an example.

-If using a **wooden pole** - Pre-drill 1/8" holes for lag bolts

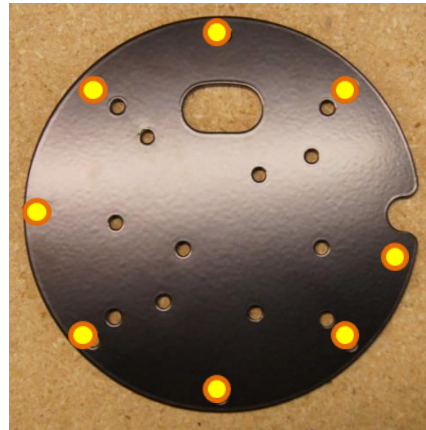
-Paint can also be removed from bottom of plate, and welded in the case of a metal pole.



-When fastening the mounting plate to a proper pole, much more holes can be utilized for added strength.

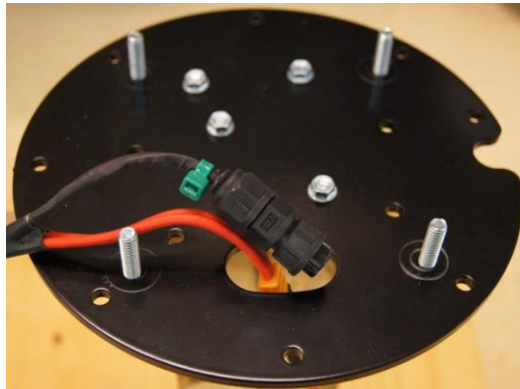


-If mounting surface is big enough, outside holes can also be used.



**Step #3 – Fastening Camera to Mounting Plate:**

-To ensure camera cable does not get pinched, and make the running of the cables easier, first feed connectors through the oval shaped hole in the plate (Only if Mounting surface allows an opening underneath!)



Lastly put camera on the mounting plate with bolts coming through the mounting holes on camera.  
-Add lock nuts. And tighten down firmly.



## Programming / Camera Operations

### Moving Camera

To move the camera you push the joystick left to move to left and right to move the camera to the right. The harder you push the joystick, the faster the camera moves; a slight push moves the camera slowly.

You can also use the joystick for zooming out by turning the knob clockwise and zoom in by turning the knob counter clockwise.

### Controller Buttons

The top rows of 12 buttons are accessory buttons that will not be used for the application you will be using the controller for.



The 6 buttons on right hand side closest to the joystick are your manual camera functions i.e. **Wide** = zoom in, **tele**=zoom out, **open & close** will be how you open & close the menu, **near & far** are your focusing buttons.

You can change the ID of the camera by pressing the **prev & next** buttons i.e. If your on camera ID 01 it will change it to camera ID 02, so if your camera ID is 01 and the controller is on camera ID 2 then it will not control your camera. **Please remember for cases you don't have control.**

Note that, when using the screen controller, the image on the screen will not change automatically when the ID is changed. To change the camera being viewed, first change the ID on the controller and then move the joystick in any direction.

These are the main buttons that you will use on the controller.

- Press **95 & Pre** to enter the menu of the camera.
- To display the menu of the controller to ensure that everything matches the camera (baudrate, protocol & camera ID), press and hold **shi & set**, do the same to remove this menu. This should only be done to verify the controller settings match the camera settings in the event you are having trouble controlling the camera.



### How to make an Auto Scan

#### **For 27X Side Mount and Top Mount**

1. Move your camera to the furthest left position that you want the camera to scan to
2. On controller keyboard press "SET" and then "1" then the "SCAN" button (your left limiter is now set)
3. Move the joystick to position the camera to the furthest right location you want to scan to
4. On controller keyboard press "SET" and then "2" then the "SCAN" button (your right limiter is now set)
5. To view the Auto Scan that you set press "1" and then "SCAN" button to the start scan

Note: to change the speed of the scan, see the keyboard controlling section in the keyboard manual

#### **For 10X**

- 1 On the Keyboard PTZ Controller, press "95" "PRE" to get into the PTZ cameras on-screen display
- 2 When you see the on-screen display on your TV, use the joystick (push down) to scroll down to #2 Dome, then press the "NEAR" button to enter (NEAR button is on the left 3 from the top)
- 3 On the next screen use the joystick to go down to #3 A-B SCAN, and press the "NEAR" button to enter
- 4 Select which preset points (see below)



To Stop the Auto Scan, just move the joystick, to restart use the appropriate speed number and CALL button again

### Creating Preset Location Points

1. Position your camera on the point of interest that you want to view, you can zoom in/out on the object location.
2. Once you have your location determined, on the Controller keypad press “PRESET” then the location number you want to create (such as 1, 2,3, etc) and “PRESET” button again
3. Continue the above step for each separate location you want to create (giving it its own number preset 1-90)
4. There is room to create up to 90 locations ranging from #1 to #90
5. To check your preset locations press the preset number on the keypad (for that location) and then PRESET button. An example sequence would be “3” “PRE” which would move the camera to the preset location you made called #3.

### To Create a Tour of your Preset Locations

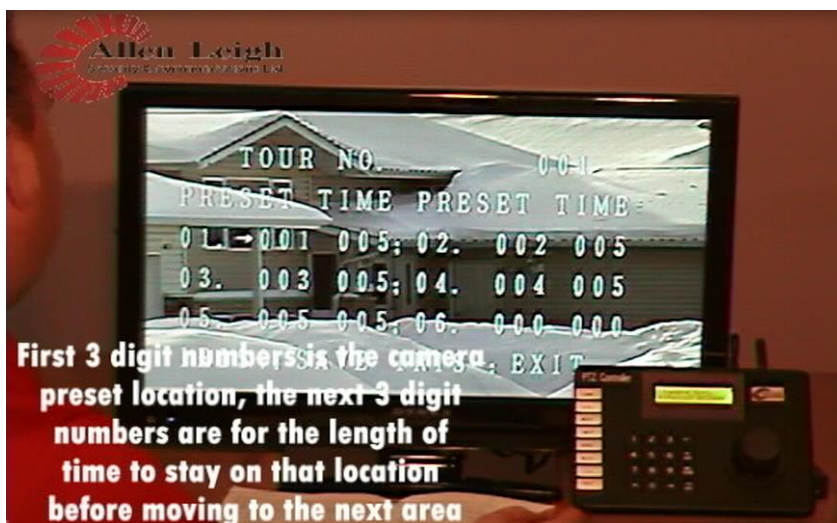
When you have all of your preset location made you can use this next step to view them automatically in whatever order you want in a continuous order.

#### **For 27X Side Mount and Top Mount**

1. On the Keyboard PTZ Controller, press “95” “PRE” to get into the PTZ cameras on-screen display
2. When you see the on-screen display on your TV, use the joystick (push down) to scroll down to #3 Auto-Run, then press the “NEAR” button to enter (NEAR button is on the left 3 from the top)
3. On the next screen use the joystick to go down to #3 TOUR, and press the “NEAR” button to enter
4. On the next screen use the joystick to go down to #2 SETUP, and press the “NEAR” button to enter
5. You will now be in the setup screen to setup up the Tours.

#### **For 10X**

6. On the Keyboard PTZ Controller, press “95” “PRE” to get into the PTZ cameras on-screen display
7. When you see the on-screen display on your TV, use the joystick (push down) to scroll down to DOME, then press the “NEAR” button to enter (NEAR button is on the left 3 from the top)
8. On the next screen use the joystick to go down to GUARD TOURS, and press the “NEAR” button to enter
9. On the next screen use the joystick to go down to SETTING, and press the “NEAR” button to enter
10. You will now be in the setup screen to setup up the Tours.



If you see this information displayed you have made the correct option choices. The numbers may look a bit confusing, hopefully the following explanation helps.

Where you see 01. 001 005

1. 01. represents the start of the Tour (there are 12 tour locations)
2. 001 represents the camera pre-set location
3. 005 is the length of time to stay on that pre-set point in seconds

Use the joystick to move the arrow to the number that you want to change, when

you are on the number you want to change use the “NEAR” and “FAR” buttons to increase or decrease the number.



You can set the tour to start with any one of your pre-set locations, and have it stay on for the length of time you want in seconds. You can have up to 12 tour locations set if you like.

Once you have the tour set to your liking, press the “OPEN” button (also known as Iris +) to save and then Press “CLOSE” button to exit.

**To View your tour on the Controller keyboard press tour number (ex. “1”) and then “TOUR”**

## Quick Guide

<b>Joystick</b>	Move camera - turn knob to zoom
<b>9 + 5 + PRE</b>	Open camera menu
<b>SET</b>	Open and close controller menu
<b>SET + # + PRESET</b>	Set up Preset location
<b># + PRESET</b>	Call Preset location
<b>“9+5+PRESET” - “Function Settings” - “Tour” - “Edit Tour” OR “9+5+PRESET” - “Dome” - “Guard Tours” - “Setting”</b>	Set up Tour
<b># + TOUR</b>	Call Tour
<b>SET + # + PAT (start) SET + 0 + PAT (end)</b>	Set up Pattern
<b>“9+5+PRESET” - “Function Settings” - “Patterns” - “Program Pattern” - “Run Pattern”</b>	Call Pattern
<b>6 + 3 + PRESET</b>	Activate camera wiper
<b>PREV &amp; NEXT</b>	Change camera ID on controller
<b>WIDE &amp; TELE</b>	Zoom in and zoom out
<b>NEAR &amp; FAR</b>	Focus camera
<b>“9+5+PRESET” - “Camera Settings” - “Advanced Settings 1” - “IR Cut Filter” and Change it to “Auto/Colour/(Black/White)</b>	Turn on/off IR LED’s
<b>6 + 2 + Preset SET + 6 + 2 + PRESET</b>	Turn on/off IR LED’s (If IR’s are set to manual)

## **Picture Problems**

If you do not get a picture right away, upon completing your connection you may have to unplug and plug the transmitter back in, this does a system reset, and usually rectifies the problem if there is no picture from the system.

If you have any problems please refer to our website for a step by step troubleshooting chart [www.cowcam.ca](http://www.cowcam.ca) this will take you directly to the support page:

If you have tried these steps and still unable to fix the problem please give us a call to speak to our helpdesk;

***\*\*Please note for the basic system it is very important that the receiver be located on the same side of the house as the transmitter is located (you may try other locations once you have acquired your signal) preferably on the inside of the outside wall so the two units can see one another through only one wall with as little obstruction as possible.***

Trees, shrubs and hay bales do not seem to hinder the picture quality too much during the winter, trees do effect the signal once the leaves come out. You may find that you may have to adjust the antenna or the receiver unit by lifting it up for better reception.

If you have buildings or machinery in the way, it will possibly lower your picture quality, it also depends on what the buildings are made of, metal or large machinery block the signal. It is best not to have anything in the way of the signal path, we understand that you cannot move buildings so try to position the transmitter higher up above the roofline or higher than the objects in the way.

If you are placing the receiver in front of a window and you are not getting a good picture it could be due to the type of windows. High energy efficiency windows in particular may restrict or block the signal. These windows contain Argon gas or a coating that seems to block the signal, just move the receiver over from the window and you will more than likely get a signal.

Metal siding will not allow a strong signal into the home if the receiver is placed behind it, so you will want to try to place the receiver near a window location. You may have to re-position the antenna angle on the receiver in order to find the best signal with the basic models you may find that you have to move the receiver up or down, trial and error will get you the best signal.

Stucco, foil covered foam, cement board, and brick may also disrupt or block the signal.

If you continue to have problems receiving a signal we do have optional external antennae that are available as well as outdoor receivers.

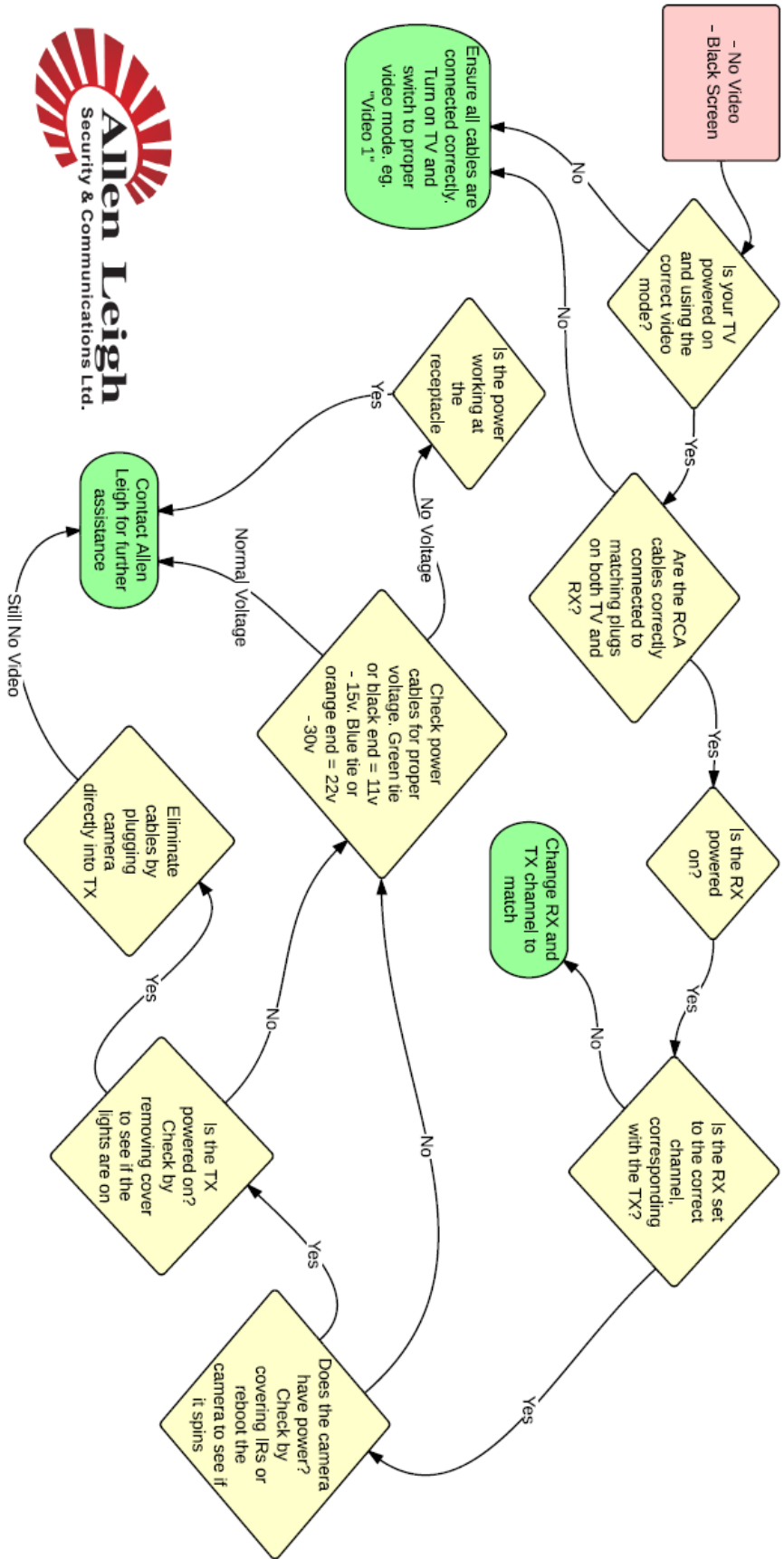
If you have any problems please refer to our website for a step by step troubleshooting chart [www.cowcam.ca](http://www.cowcam.ca) this will take you directly to the support page:

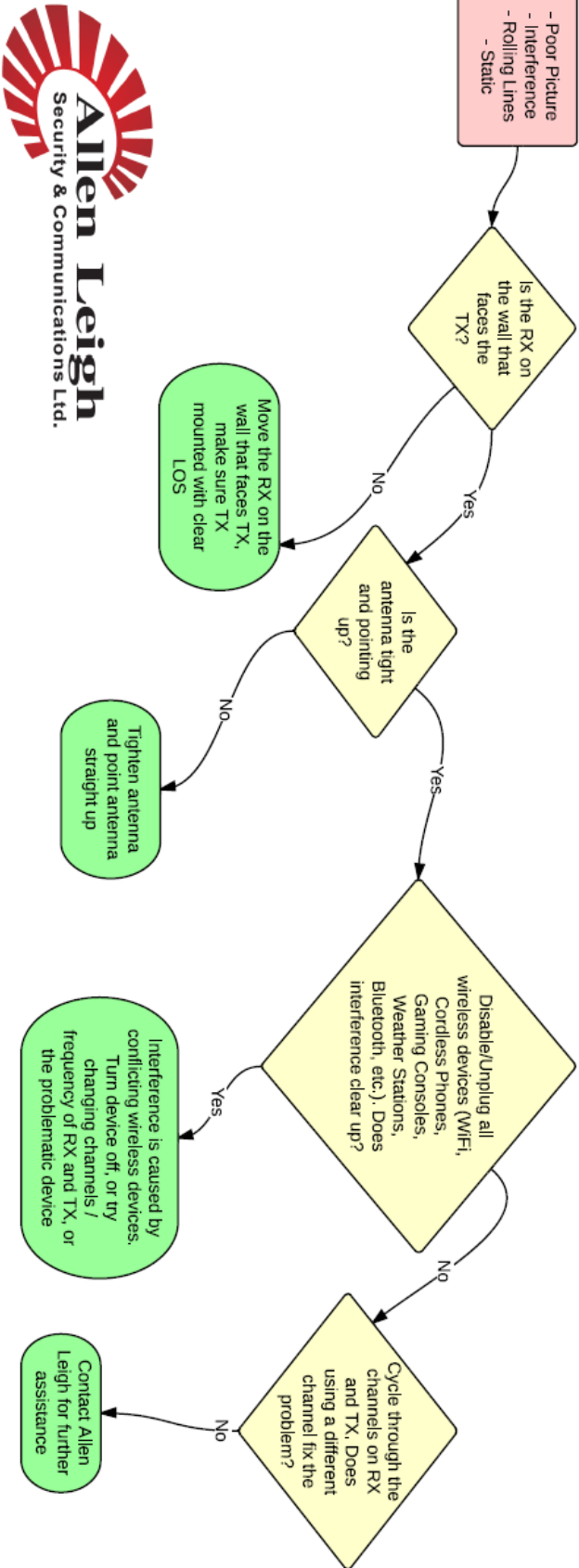
If you have tried these steps and still unable to fix the problem please give us a call to speak to our helpdesk;

Office: 204-728-8878 Or Toll Free: 1-866-289-8164

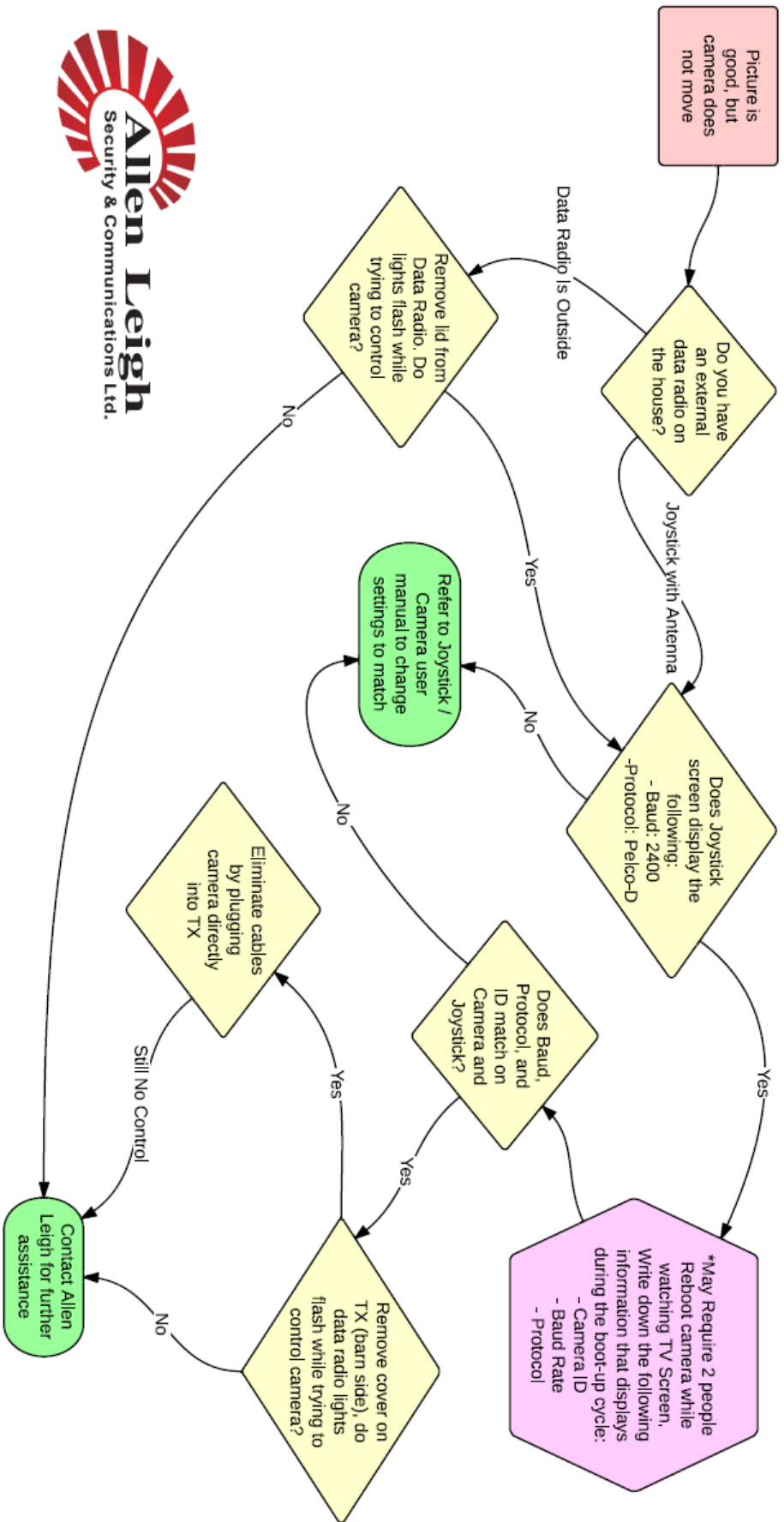
Thank You and Enjoy!

Allen Leigh Security & Communications Team









## **DVR Installation Instructions:**

**Step 1:** Unpack everything from the DVR box. You should have:

- (1) DVR
- (1) Remote
- (1) Mouse
- (1) Power supply
- (1) HDMI cable
- (\*) RCA to BNC connectors 1 per receiver
- (1) Data Box

**Step 2:** connect the RCA to BNC connectors to the back of the DVR.

**Step 3:** plug the mouse into the USB port on the front of the DVR

**Step 4:** plug one end of the HDMI cable into the HDMI port on the back of the DVR. Plug the other end into your TV

**Step 5:** Plug the cable on the Data Box into the USB port on the back of the DVR.



**Step 6:** Plug the two bare wires on the Data Box adapter into the green slots on the back of the DVR. Use a screwdriver to depress the red tabs and allow you to plug in or remove wires.

A = Red wire      B = Black wire

**Step 7:** plug the power supply into the wall and into the back of the DVR.

**Step 8:** plug one end of the RCA cable provided with your receiver into the back of the receiver and the other end into the corresponding port on the back of your DVR. (ie. CH 1, CH 2, CH 3, CH 4)

You should be able to view your cameras and DVR screen on your TV

## **Getting your cameras on your smart phone**

### **Peer to Peer(P2P)**

Step 1: enable DHCP:

A) Log into your DVR:

User name: user

Password:8878

B) go to Settings>Network>choose tcp/ip

C) for mode click the DHCP box and hit apply then save .

Step 2: enable P2P

A) From the main menu go to Settings>Network choose P2P on the left. Click the enable box and hit the Save button at the bottom

B) go to Settings>Network to the P2P menu and click online. Then Save.

Step 3: get your Serial Number and QR scan Code

- A) From the main menu go to Info>System
- B) On the left hand side go to Version. This will show your scan code and Serial Number. Keep this screen up for the next part.

If you have an **Iphone** download an app called **IDMSS LITE** then open the app.

- 1 push the lines ichon in the upper left. This is your menu push the device manager menu option to open.
- 2 Push the + ichon on upper right for a new connection.
- 3 Choose P2P
- 4 Hit the QR Scan at the top
- 5 Take a picture of the QR Scan Code on your Monitor
- 6 Give the connection a name
- 7 Enter your user name and password for the DVR
- 8 Click Live preview at the bottom to see your cameras

If you have an **Android** phone.. Download an App called **GDMSS LITE** and launch it

- 1 Click the Play button in the upper right
- 2 Click the plus button to make a new connection
- 3 Click the QR Scan Code
- 4 Take a picture of the QR Scan Code on your monitor
- 5 Enter a name for the connection
- 6 Enter your user name and password for the DVR
- 7 Click Live Preview at the bottom to see your cameras

Port Forwarding:

Port forwarding requires a bit more knowledge of your router in order to set up for you. For assistance with port forwarding please call technical support.

Office: 204-728-8878  
or  
Toll Free: 1-866-289-8164

### **Port Forwarding:**

What is port forwarding?

**port forwarding** or **port mapping** is an application that redirects a communication request from one address and port number combination to another while the packets are traversing a network gateway, such as a router or firewall This technique is most commonly used to make services on a host residing on a protected (internal) network available to hosts on the opposite side of the gateway (external network), by remapping the destination IP address and port number of the communication to an internal host.

Why is it important?

We use port forwarding to remove any barriers that may block your camera signals going up through the internet and down to your phone or tablet. Your Internet Service Provider (ISP) may also block ports on their end and prevent you from getting the signal through. The ports we use are 37777, 5554 and 8080. It is important that these ports be opened by your ISP or you will be unable to have your smart phone connect to your cameras outside your local network..

## Audio Modification

### Installation Steps:

If the Audio Modification Box option was purchased, you will have two cable ends, they are setup so that the camera end will fit into one side and the camera cable into the other the connectors, the connectors on the audio box are opposites. The audio modification box is



designed to be mounted onto the wall it has mounting holes for it. You can mount the audio mod either right before the camera or the transmitter box which ever works best for you. On the inside of the Audio device you will see an adjustment knob, this is how you would adjust your audio sensitivity.



## Expansion Pack

### Installation Steps:

You will notice that the cameras are labelled ID1, ID2, ID3, & ID4.

This is to match the ports on the expansion box (white) Cam1, Cam2, Cam3 & Cam4. Please plug the camera into the corresponding plug, this is to ensure movement of your camera.

You will plug the receiver using the stereo plugs or RCA cords that have come with your system into the video port of your TV. All the camera's video signal will be coming in on one channel (usually CH 1). The way you would switch back and forth from camera1 to camera2 and so forth will be through your PTZ controller.

If you would like to see the camera that is plugged into Cam Port1 you will press 1 CAM on the controller then move the joystick. If it's the camera that is plugged into Cam Port2 then you will press 2 CAM on the controller then move the joystick and so on.

If you have purchased a DVR with your Expansion Pack you will have special adaptors that will plug into all 4 channel ports on the DVR. (You will see the same camera on all 4 channels) In order to switch from camera to camera, whether it be on the DVR itself or through the app on your phone, you will right click and click on View1 then you will select the camera in the drop down box that you wish to view. This will switch to that camera on that port of the expansion box. You will then need to right click again and click on pan tilt/ zoom once the little screen pops up you can press on any of the arrows to send a signal and that video on that port will open up. You will need to continue these steps for every other camera you wish to view.

\*\*Please note that the Expansion pack was not originally designed to work with a DVR. This is a new development that we have made to help make your calving easier, safer and more profitable. Some extra steps are required to use it in this way.

## High Gain Antenna

### Installation Instructions:

If you purchased the optional external High Gain Antenna to get better distance, you will want to use the same guide lines as for the standard antenna. You will need to remove the rubber spike antenna and



replace it with the coax from the High Gain Antenna. The antenna will then be mounted outside facing toward the transmitter, please note the orientation arrows on the back of the unit.



---

*Make your analog system smart phone compatible!!*

Watch from the comforts of home or take your work with you and monitor your system from your smart phone.

With the DVR & data radio kit you can have it all.

This kits includes the data radio, 1 hour IP support and  
DVR Kit.....\$631

For each additional receiver with DVR adapter.....\$225



**\*\*Please note that you will need a receiver for every camera**