



TRUSTED QUALITY

TRUSTED SUPPORT

TRUSTED SERVICE

SPRING 2024 CATALOGUE

IMPLEMENT CAMERAS



www.precisioncam.ca
info@allenleigh.ca

Toll Free: 866-289-8164
Ph: 204-728-8878

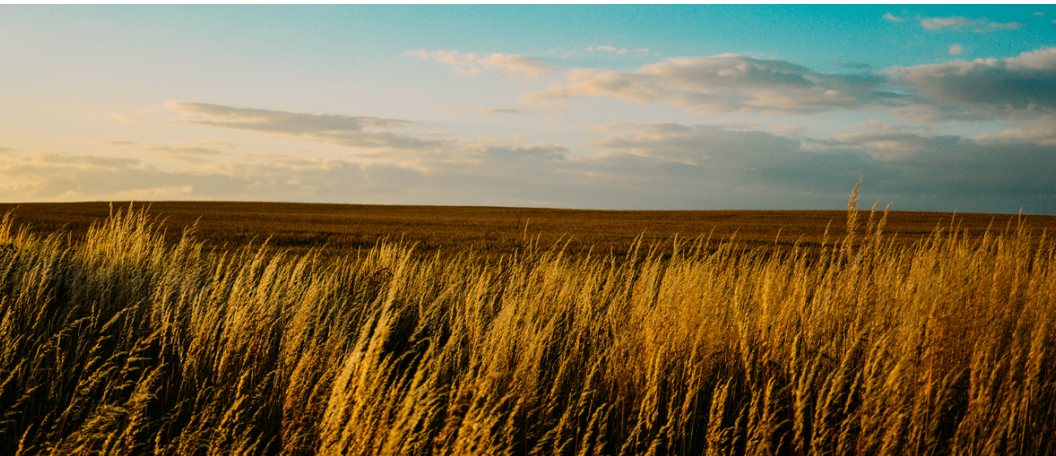
TABLE OF CONTENTS

Standard Wired Kits	4-5
Wired LCD Monitors	5
Wired Cameras	6-7
Cables	8
Accessories	9-10
Adapters	11-14
HD Wired Equipment	15-17
HD WiFi Cameras	18-19

MAKING YOUR FARMING EASIER, SAFER & MORE PROFITABLE!

Precision Cam specializes in implement camera systems, wireless livestock monitoring systems, wireless driveway alarms, and wireless farmyard surveillance systems. We are focused on providing specialized high-quality products and outstanding customer service for the agricultural community.

We don't just sell products – we provide solutions!



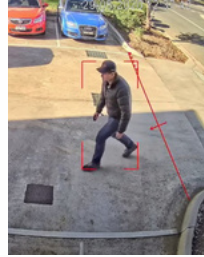
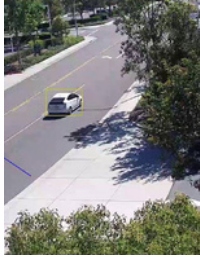
HAVE QUESTIONS?

Contact us today at **204-728-8878**, toll free **1-866-289-8164**
or via email at **info@allenleigh.ca**

Prices are subject to change and are in Canadian dollars.

AI SMART CAMERA SYSTEMS

We now offer a range of advanced AI cameras. They include smart features such as perimeter detection, human/vehicle detection, motion tracking and more.



Give us a call for more information and pricing!

1 866-289-8164

LIVESTOCK CAMERAS



Owning a Livestock Camera system will be one of your best livestock equipment investments - guaranteed!

Precision Cam wireless long-range livestock camera systems allow you to monitor your animals from the comfort of your home, office, TV, computer and smartphone.

IMPLEMENT CAMERA KITS FOR SEEDING CARTS



*All wired monitors and cameras come with a two-year warranty.
All other products carry a one-year warranty.*

*All of our implement cameras are weatherproof and
will operate in temperatures down to -25C (-13F)*

HOW WILL IMPLEMENT CAMERAS BENEFIT YOU?

- **Don't open another bag of seed if you don't have to!** Monitor the inside of your seeder tank while seeding canola with detailed video showing the amount of seed left in the bottom of the tank.
- **Place a camera at the spout of an auger** to monitor truck or cart filling or to aid in lining up to a bin.
- **Watch anhydrous tank levels** so you can notify the nursing truck on time, determining tank orientation and keeping tanks balanced.
- **Watch chain-driven pumps** to make sure they don't throw chains off.
- **Watch pressure gauges** for wing down pressure to ensure a consistent depth.
- **While loading a grain truck or cart,** watch from inside the cab to ensure even loading with no spilling.
- **Use cameras to help you maneuver** when backing up to a hopper, or **for road safety.**

STANDARD WIRED MONITORS & KITS

7" & 9" LCD MONITORS

All Precision Cam 7" and 9" monitors have four video inputs and an auto-circulate feature. They come with a main power harness with a cigarette lighter DC plug and a DC power cable with a fuse, a remote, a U-bracket and a pedestal mount.

Cameras are sold separately, these monitors are not HD compatible.

For our HD Monitors, Cameras and Kits, please see pages 15-19.

7" LCD Monitor **\$350.00**

SKU: C4MON

One seven-inch colour high-resolution (800x480) monitor with four channels

7" LCD Quad/Split Screen Monitor **\$495.00**

SKU: CQ7MON

One seven-inch colour high-resolution (800x480) quad/split screen monitor

9" LCD Quad/Split Screen Monitor **\$565.00**

SKU: CQ9MON

One nine-inch colour high-resolution (800x480) quad/split screen monitor



AIR SEEDER TANK KITS

Air seeder kits come with everything you need to wire up your seeder including cameras. **Monitors are sold separately, these camera kits are not HD compatible.** For our HD Monitors, Cameras and Kits, please see pages 15-19.

All kits include:

- 6mm white light cameras for inside tanks (CCAMZ WL)
- 4-in-1 cable set with 6m cab adapter, 12m extension, 5m cart adapter, and 2 hitch brackets
- 5m single-camera cables for tank cameras
- Magnetic mounts for cameras
- Air seeder tank adapters for tank cameras

Rear camera kits also include:

- 6mm IR camera for rearview (CCAMZ)
- 10m single-camera cable for rearview cameras

2 TANKS **\$961.00**

SKU: IMP-KIT-2TANK

2 TANKS WITH REAR CAM **\$1,204.00**

SKU: IMP-KIT-2TANK-W/REAR CAM

3 TANKS **\$1,264.00**

SKU: IMP-KIT-3TANK

3 TANKS WITH REAR CAM **\$1,507.00**

SKU: IMP-KIT-3TANK-W/REAR CAM

4 TANKS **\$1,569.00**

SKU: IMP-KIT-4TANK

4 TANKS WITH REAR CAM **\$1,798.00**

SKU: IMP-KIT-4TANK-W/REAR CAM



WIRED CAMERAS

THE PERFECT SOLUTION FOR AIR SEEDER TANKS!

These heavy-duty wired cameras are compatible with any Precision Cam monitor. They have 18 high output LEDs for night vision and come with a 2 year warranty. Wired Precision Cam cameras are also compatible with most other brands (adapter may be required).

*Waterproof, 700TVL resolution, includes mounting bracket and 30cm (12in) cable, Precision Cam 4-pin connector. Available with wide (2.8mm), regular (3.6m), or zoom (6mm) lens. Available with IR or white LED night vision. **Not HD compatible***

6mm White Light Camera (Zoom)

\$210.00

SKU: CCAMZ WL

Great for deep tanks, the zoom lens allows you to focus on the bottom of the tank and see exactly what's happening. The outdoor nighttime viewing distance is 10m (30'). It has the most realistic view of all our wired white light LED cameras.

3.6mm White Light Camera (Regular)

\$210.00

SKU: CCAMR WL

This camera provides a wider view than the 6mm lens, and can be used inside the tank or for most other applications. The outdoor nighttime viewing distance is 10m (30').

2.8mm White Light Camera (Wide)

\$210.00

SKU: CCAMW WL

This camera is good for small and wide tanks or for other applications as well. Objects will appear to be smaller and further away due to depth perception. The outdoor nighttime viewing distance is 10m (30').



WIRED CAMERAS



LENS COMPARISON CHART

(please make sure you are comparing horizontal views)

Lens Size	Horiz. View/ Diag. View	Horiz. View at 1.5m (5')	Horiz. View at 3m (10')	Horiz. View at 15m (49.5')
CCAMW (2.8mm)	110°/136°	4m (14')	8.5m (28')	42m (140')
CCAMW (3.6mm)	74°/92°	2.2m (7.5')	4.5m (15.0')	22.8m (75')
CCAMW (6mm)	42°/53°	1.15m (3.8')	2.3m (7.6')	11m (38')

6mm IR Camera (Zoom)

\$190.00

SKU: CCAMZ

The zoom lens offers a 42° horizontal field of view. This camera gives you one of the tightest views available. It allows the operator to see further back in greater detail. Great as a rear-view camera and for large carts.

3.6mm IR Camera (Regular)

\$190.00

SKU: CCAMR

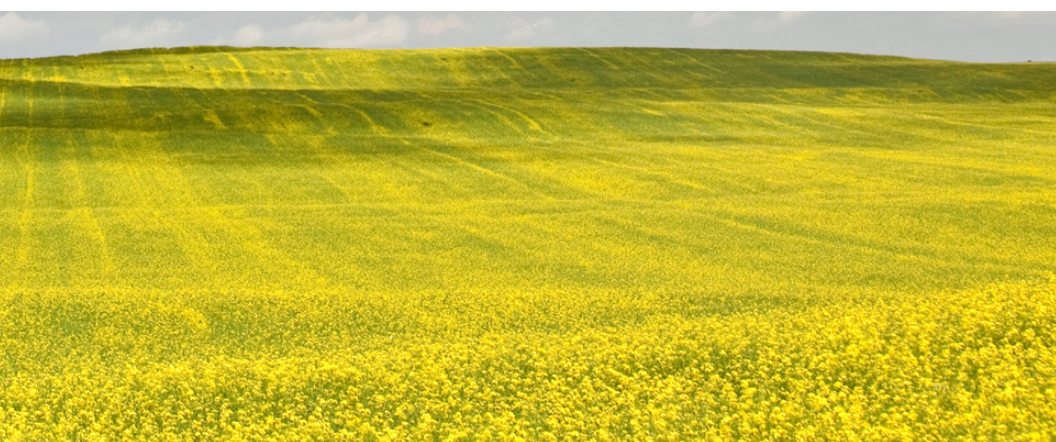
This camera offers a 74° horizontal field of view. It's ideal for grain carts, watching tow-behind implements, sprockets and gauges. It can be mounted on the ends of augers or underneath tanks to monitor wheels for mud or trash build-up. It can be used in many applications where you need an extra set of eyes.

2.8mm IR Camera (Wide)

\$190.00

SKU: CCAMW

The wide-angle lens offers a 110° horizontal field of view. Camera gives the widest view available. Objects will appear smaller and further away due to depth perception.



CABLES

SINGLE CAMERA CABLES

SD & HD Compatible



Lengths:

- 1.5m (4ft)
- 3m (10ft)
- 5m (15ft)
- 10m (30ft)
- 15m (50ft)
- 20m (60ft)

- SKU: 1.5ME
- SKU: 3ME
- SKU: 5ME
- SKU: 10ME
- SKU: 15ME
- SKU: 20ME

- \$15.00**
- \$17.00**
- \$20.00**
- \$22.00**
- \$27.00**
- \$35.00**



4-IN-1 CABLES

Precision Cam designed this cable so that you can easily run four cameras from your cab monitor to your air cart with only one cable. These 4-in-1 cables make your installation easier, faster and safer. **Not HD compatible.**

4-in-1 cable kit with 6m (20ft) cab side splitter, 12m (40ft) or 15m (50ft) extension, 5m (15ft) cart side splitter, and 2 hitch brackets.

SKU: 4-in-1 12M KIT \$339.00 **SKU: 4-in-1 15M KIT \$364.00**

Cab/monitor side adapter with four female 4-pin plugs and a male 7-pin plug. 6m (20ft).

SKU: 4-in-1 CAB ADAPTER 6M Y \$100.00

Cart/camera side adapter with four male 4-pin plugs and a female 7-pin plug. Available in 1m (3ft) or 5m (15ft) lengths.

SKU: 4-in-1 CART ADAPTER 1M Y \$60.00

SKU: 4-in-1 CART ADAPTER 5M Y \$95.00

Extension cable with 7-pin male and female plugs. Available in 5m (15ft), 12m (40ft), and 15m (50ft) lengths.

SKU: 4-in-1 EXTENSION CABLE 5M \$100.00

SKU: 4-in-1 EXTENSION CABLE 12M \$120.00

SKU: 4-in-1 EXTENSION CABLE 15M \$145.00



ACCESSORIES

Magnetic Camera Mount

This rugged rubber coated mount contains 10 powerful neodymium magnets with a total pulling force of 80lbs. Compatible with all Precision Cam implement cameras. **HD compatible.**

SKU: MAG-80#

\$35.00



RAM Mounts HD compatible

Glass-mount kit comes with swivel base and suction cup.

SKU: GLASS MOUNT
\$85.00



Bar-mount kit comes with swivel base and bar-mounting hardware.

SKU: BAR MOUNT
\$85.00

Implement Quad/Split System Upgrade

Quad processor box used to add additional camera inputs to monitors, splits one existing input into 4 resulting in 3 additional camera inputs. **Not HD compatible.**

SKU: IMP QUAD
\$300.00



Replacement Monitor Harness

Replacement monitor harness with male 13-pin plug. **Not HD compatible.**

SKU: HRNMQUAM \$60.00

ACCESSORIES

Air Seeder Wall Tank Plug

HD compatible

This specially designed adapter allows you to easily install a wired camera in your seed tank without losing back pressure or allowing moisture in. It has plenty of threads to go through any metal or poly tank.

Compatible with all Precision Cam wired cameras.

SKU: ADP-AS \$42.00



Hitch Mounting Bracket

HD compatible

Hitch mounting bracket for male 7-pin connector.



SKU: 4-in-1 HITCH BRACKET \$12.00

Camera Cable Dust Caps

HD compatible

Screw on caps for the protection of unused cables. They are sold per pair (one male and one female).

SKU: DUST CAPS \$4.00



Air Seeder Tank Gauge

HD compatible

This self-adhesive scale allows you to monitor the level in the tank.

SKU: AST GAUGE \$20.00



Cigarette lighter adapter power cable for implement monitors. **HD compatible.**

SKU: CBL-PWR-CLA \$5.00

Power Cables & Adapters



Hard wired power cable for implement monitors and cameras. **HD compatible.**

SKU: CBL-PWR-IMP \$5.00

ADAPTERS



Precision Cam adapters are made-to-order.



CASE-IH (Pre-wired) Adapter

SKU: IMP-ADP-CIH \$40.00

This adapter connects a Precision Cam camera to Case-IH or New Holland equipment that has been pre-wired for cameras. This adapter is 15cm (6in) long and supports 1 camera. **Not HD compatible.**



Case-IH AFS Pro/New Holland IntelliView Adapter

SKU: IMP-ADP-CBL300 \$70.00

This adapter connects a Precision Cam camera to a CASE-IH AFS Pro 200, 300 or 700 or New Holland IntelliView II, III or IV monitor. This adapter is 15cm (6in) long and supports 1 camera. **Not HD compatible.**



Case-IH AFS Pro/New Holland IntelliView Adapter

SKU: IMP-ADP-CBL700 \$165.00

This adapter connects Precision Cam cameras to CASE-IH AFS Pro 200, 300 or 700 or New Holland IntelliView II, III or IV Monitors. This adapter is 15cm (6in) long and supports 3 cameras. **Not HD compatible.**



CLAAS Adapter

SKU: IMP-ADP-CLAAS \$75.00

This adapter connects a Precision Cam camera to a CLAAS monitor. This adapter is 15cm (6in) long and supports 1 camera. PAL camera may be required. **Not HD compatible.**



Fendt/John Deer M12 Adapter

SKU: IMP-ADP-FENDT \$75.00

This adapter connects a Precision Cam camera to a Fendt monitor. This adapter is 15cm (6cm) long and supports 1 camera. This adapter also works with John Deere equipment that comes pre-wired for cameras using the round 5-pin connectors. **Not HD compatible.**



Grimme/Spudnik Adapter

SKU: IMP-ADP-GRIM \$80.00

This adapter connects a Precision Cam camera to a Grimme/Spudnik monitor. This adapter is 15cm (6in) long and supports 1 camera. PAL camera may be required. **Not HD compatible.**

ADAPTERS

John Deere 2630 Adapter

SKU: IMP-ADP-2630 \$180.00

This adapter connects Precision Cam Cameras to a John Deere 2630 monitor. This adapter is 1m (3ft) long and supports 3 cameras. **Not HD compatible.**



John Deere 4640 Adapter

SKU: IMP-ADP-4640 \$180.00

This adapter connects Precision Cam cameras to a John Deere 4640 monitor. This adapter is 1m (3ft) long and supports 4 cameras. **Not HD compatible.**



John Deere GS3/Gen 4 Adapter

SKU: IMP-ADP-GS3C \$70.00

This adapter connects a Precision Cam camera to a John Deere GS3/Gen 4 monitor. This adapter is 5m (15ft) long and supports 1 camera. **Not HD compatible.**



Outback/AG Cam Female Adapter

SKU: IMP-ADP-OBG (F-F) \$70.00

This adapter connects a Precision Cam monitor to an Outback/AG Cam camera. This adapter is 15cm (6in) long and supports 1 camera. **Not HD compatible.**



Outback/AG Cam Male Adapter

SKU: IMP-ADP-OBG (M-M) \$70.00

This adapter connects a Precision Cam camera to an Outback/AG Cam monitor. This adapter is 15cm (6in) long and supports 1 camera. **Not HD compatible.**



Orlaco/Case/Cat Adapter

SKU: IMP-ADP-ORLACO \$80.00

This adapter connects a Precision Cam camera to an Orlaco/Case/Cat monitor. This adapter is 15cm (6in) long and supports 1 camera. **Not HD compatible.**



ADAPTERS



John Deere/Voyager 3 Harness Adapter (Camera Side)

SKU: IMP-ADP-VCS3-CAM \$180.00

This adapter connects Precision Cam cameras to a John Deere/Voyager 3 camera harness system. This adapter is 1m (3ft) long, and supports 3 cameras. **Not HD compatible.**



John Deere/Voyager 3 Harness Adapter (Monitor Side)

SKU: IMP-ADP-VCS3-MON \$200.00

This adapter connects a Precision Cam monitor to a John Deere/Voyager 3 camera harness system. This adapter is 6m (20ft) long and supports 3 camera. **Not HD compatible.**



Raven Viper 4 Adapter

SKU: IMP-ADP-RV4 \$130.00

This adapter connects Precision Cam cameras to a Raven Viper 4 monitor. This adapter is 1m (3ft) long and supports 3 cameras. **Not HD compatible.**



Trimble Adapter

SKU: IMP-ADP-TRIM \$80.00

This adapter connects a Precision Cam camera to a Trimble monitor. This adapter is 5m (15ft) long and supports 1 camera. **Not HD compatible.**



Versatile Adapter

SKU: IMP-ADP-VERSE \$100.00

This adapter connects a Precision Cam camera to a Versatile monitor. This adapter is 15cm (6in) long and supports 1 camera. PAL camera may be required. **Not HD compatible.**



Voyager Male Adapter

SKU: IMP-ADP-VCS (M-M) \$125.00

This adapter connects a Precision Cam camera to a Voyager monitor. This adapter is 25cm (10in) long and supports 1 camera. Price is reduced by \$30 when purchased with a Precision Cam camera or monitor. **Not HD compatible.**

ADAPTERS

Voyager Female Adapter

SKU: IMP-ADP-VCS (F-F) \$125.00

This adapter connects a Precision Cam monitor to a Voyager camera. This adapter is 25cm (10in) long and supports 1 camera. Price is reduced by \$30 when purchased with a Precision Cam camera or monitor. **Not HD compatible.**



4-in-1 John Deere 2630 Adapter

SKU: 4-IN-1 Cab Adapter 10M 2630 \$205.00

This adapter connects Precision Cam cameras to a John Deere 2630 monitor using the Precision Cam 4-in-1 cable system. This adapter is 10m (30ft) long and supports 3 cameras. This adapter replaces the 4-in-1 cab side splitter cable and plugs directly into the 2630 monitor. **Not HD compatible.**



4-in-1 John Deere GS3/Gen 4 Adapter

SKU: 4-IN-1 Cab Adapter 6M Y GS3C \$220.00

This adapter connects Precision Cam cameras to a John Deere GS3/Gen 4 monitor using the Precision Cam 4-in-1 cable system. This adapter is 6m (20ft) long and supports 4 cameras. This adapter replaces the 4-in-1 cab side splitter cable and plugs into the four 4-pin connectors located at the rear of the cab. **Not HD compatible.**



4-in-1 Outback/AG Cam Adapter

SKU: 4-IN-1 Cab Adapter 6M Y OBG \$145.00

This adapter connects Precision Cam cameras to an Outback/AG Cam monitor using the Precision Cam 4-in-1 cable system. This adapter is 6m (20ft) long and supports 4 cameras. This adapter replaces the 4-in-1 cab side splitter cable. **Not HD compatible.**



4-in-1 Outback/AG Cam Adapter (1m)

SKU: 4-IN-1 Cart Adapter 1M Y OBG \$140.00

This adapter connects a Precision Cam monitor to Outback/AG Cam cameras using the Precision Cam 4-in-1 cable system. This adapter is 1m (3ft) long and supports 4 cameras. This adapter replaces the 4-in-1 cart side splitter cable. **Not HD compatible.**



4-in-1 Outback/AG Cam Adapter (5m)

SKU: 4-IN-1 Cart Adapter 5M Y OBG \$175.00

This adapter connects a Precision Cam monitor to Outback/AG Cam cameras using the Precision Cam 4-in-1 cable system. This adapter is 5m (16ft) long and supports 4 cameras. This adapter replaces the 4-in-1 cart side splitter cable. **Not HD compatible.**



4-in-1 Raven Viper 4 Display Adapter

SKU: 4-IN-1 Cab Adapter 10M RV4 \$190.00

This adapter connects Precision Cam cameras to a Raven Viper 4 monitor using the Precision Cam 4-in-1 cable system. This adapter is 10m (30ft) long and supports 4 cameras. This adapter replaces the 4-in-1 cart cab side splitter cable. **Not HD compatible.**



HD WIRED EQUIPMENT

HD MONITORS

HD LCD display, 4 camera inputs.

Compatible with both HD and SD cameras

10" Quad \$650.00

SKU: HDQ10MON

7" Quad \$550.00

SKU: HDQ7MON



Includes; monitor, remote, u-bracket, pedestal mount, cigarette lighter adapter, hard-wired power cord, remote, mounting hardware, sun-visor, and harness. 1024x600 display resolution, compatible with 12V or 24V systems.



HD CAMERAS

These HD heavy-duty wired cameras are compatible with any Precision Cam HD monitor. They have 18 high output LEDs for night vision and come with a 2 year warranty. Waterproof, 960p resolution, includes mounting bracket, 30cm (12in) cable, Precision Cam 4-pin connector. Available with wide (2.8mm), regular (3.6mm), or zoom (6mm) lens. Available with IR or white LED night vision.



3.6mm IR (Regular) \$235.00

SKU: HDCAMR

3.6mm White Light (Regular) \$255.00

SKU: HDCAMR WL

2.8mm IR (Wide) \$235.00

SKU: HDCAMW

2.8mm White Light (Wide) \$255.00

SKU: HDCAMW WL

6mm IR (Zoom) \$235.00

SKU: HDCAMZ

6mm White Light (Zoom) \$255.00

SKU: HDCAMZ WL

HD 4-IN-1 CABLES



HD rated full 4-in-1 cable kit with 6m (20ft) cab side splitter, 12m (40ft) or 15m (50ft) extension, 5m (15ft) cart side splitter, and 2 hitch brackets

With 12m (40ft) Extension **\$477.00**
SKU: HD 4-IN-1 12M KIT

With 15m (50ft) Extension **\$502.00**
SKU: HD 4-IN-1 15M KIT



HD rated cab/monitor side adapter with four female 4-pin plugs and a male 7-pin plug. 6m (20ft) long.

SKU: HD 4-IN-1 CAB ADAPTER 6M Y
\$133.00



HD rated cart/camera side adapter with four male 4-pin plugs and a female 7-pin plug. 5m (15ft) long.

SKU: HD 4-IN-1 CART ADAPTER 5M Y
\$130.00



HD rated extension cable with 7-pin male and female plugs.

12m (40ft) **\$190.00**
SKU: HD 4-IN-1 EXTENSION CABLE 12M

15m (50ft) **\$215.00**
SKU: HD 4-IN-1 EXTENSION CABLE 15M

HD WIRED EQUIPMENT

HD AIR SEEDER TANK KITS

HD air seeder kits come with everything you need to wire up your seeder including cameras. **Monitor must be purchased separately.**

All kits include:

- HD 6mm white light cameras for inside tanks (HDCAMZ WL)
- HD rated 4-in-1 cable set with 6m cab adapter, 12m extension, 5m cart adapter, and 2 hitch brackets
- 5m single-camera cables for tank cameras
- Magnetic mounts for cameras
- Air seeder tank adapters for tank cameras



Rear camera kits also include:

- HD 6mm IR camera for rearview (HDCAMZ)
- 10m single-camera cable for rearview cameras

2 TANKS

SKU: HD-IMP-KIT-2TANK

\$1,184.00

2 TANKS WITH REAR CAM

SKU: HD-IMP-KIT-2TANK-W/REAR CAM

\$1,477.00

3 TANKS

SKU: HD-IMP-KIT-3TANK

\$1,537.00

3 TANKS WITH REAR CAM

SKU: HD-IMP-KIT-3TANK-W/REAR CAM

\$1,825.00

4 TANKS

SKU: HD-IMP-KIT-4TANK

\$1,887.00

4 TANKS WITH REAR CAM

SKU: HD-IMP-KIT-4TANK-W/REAR CAM

\$2,161.00



IMPLEMENT WIFI CAMERAS

WIFI IMPLEMENT CAMERA - NEW MODEL

The WiFi Implement Camera is our newest version of wireless implement camera. The 2.4GHz WiFi radio allows you to connect directly to the camera from your phone. No password is required, so it is easy to connect with the app!

Features:

- The camera has a 2.8mm lens for a wide angle view
- Colour image during the day with a CMOS chip, IR vision in low light
- 802.11 WiFi standard, allows up to 100m transmission in open air
- Compatible with Android and iOS devices using the SWD Camera app
- 540TVL analog resolution
- Metal waterproof housing, IP67 rating
- 12-24VDC input
- 1-year warranty

WiFi Imp Camera

SKU: WiFi Imp Camera WP

\$300.00



IMPLEMENT WIFI CAMERAS

ANDROID ONLY WIFI IMPLEMENT PRO CAMERA

This model has been discontinued, available only while supplies last.

The WiFi Pro Cam is a rugged implement camera. Made with ½" thick solid anodized aluminum and extra-thick front glass. It's built for harsh environments.

Features:

- Long-range IR night vision (up to 25m)
- Specially made extended mount to allow extra freedom of movement
- Heavy duty waterproof housing
- Compatible **ONLY** with Android on the Onvier app
- 2-meter heavy-duty power cable
- Dual-stream video 1080p/720p
- 12-32VDC input
- Built-in 2.4GHz WiFi radio allows it to connect directly to your device without the need for an existing WiFi Network
- 1-year warranty



CLEARANCE PRICE

SKU: WiFi Implement Camera Pro Kit

\$210

ADDITIONAL PRODUCTS & SERVICES FROM PROTELEC/ALLEN LEIGH



Water Flow Monitoring & Leak Detection

Monitoring for leaks, water pipe ruptures and flooding. Our water flow monitoring system helps you conserve water and save money.



Property Security & Proactive Monitoring

ProTELEC specializes in preventative security services for commercial properties using AI cameras, access control, zoned alarms and more.



Lone Worker Safety Monitoring

The Safe Alone app has flexible settings, meets Provincial Lone Worker Legislation requirements, and provides affordable safety checks.



A BRAND OF ALLEN LEIGH SECURITY

545 Assiniboine Ave
Brandon MB R7A 0G3

Ph: 204-728-8878
Toll Free: 1-866-289-8164
Email: info@allenleigh.ca

ALL PRICES SUBJECT TO CHANGE



Visit our website to find your local dealer:

www.precisioncam.ca

Follow us on social media:



Interested in becoming a Precision Cam dealer? Contact us!